

Your Local Cancer Care

BRINGING RADIATION TREATMENT TO MOSES LAKE

Experience Drives Bob Fancher's Support of the Your Local Cancer Care Campaign



Bob Fancher became involved in building a radiation treatment facility in Moses Lake to improve the recovery time of patients, a need he has seen first-hand.

"Cancer has affected my life for many years," Bob says. "It took my grandmother when I was in my 20s, my sister when she was 52, my mother when she was in her 60s and my wife Karen at 63."

"My present wife Frances was diagnosed with breast cancer a few short years ago and had to travel five days a week to Wenatchee for radiation. When the opportunity came to get a radiation machine in Moses Lake, I was glad to help."

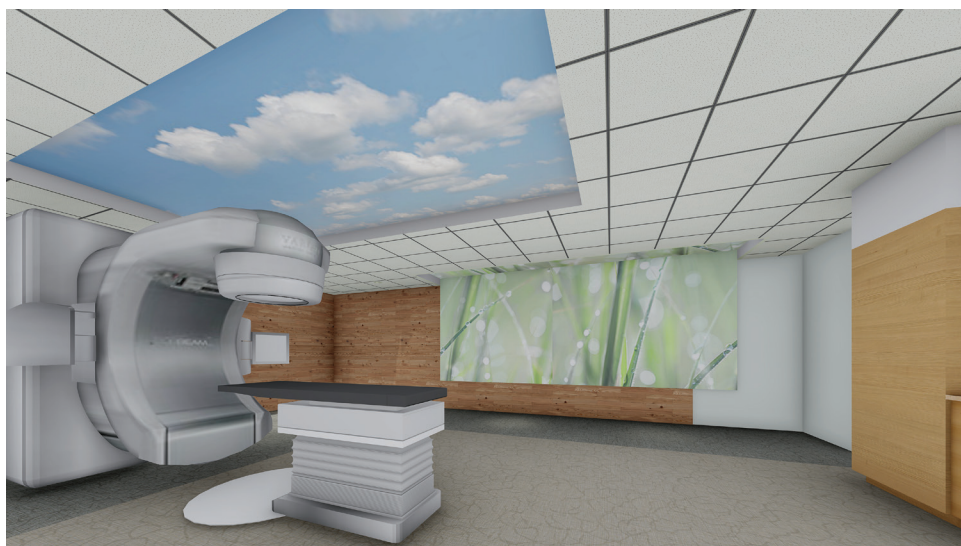
Bob, vice president at Maiers Development Corporation and general manager at Central Terminals, experienced the difficulties created by the need to travel for treatment.

"It's hard on people to travel every day that far for five minutes of radiation treatment," he says. "With a machine here, people will have a much easier recovery."

A radiation treatment facility in Moses Lake also will provide respite for caregivers, which patients often worry about. "When my wife was going back and forth, we tried to get someone to go with her every day," Bob says. "But she felt it was a hardship. She appreciated the help, but she didn't want to be a burden."

Bob is a member of the *Your Local Cancer Care* capital campaign committee and has pledged to the effort to bring radiation treatment to the Columbia Basin. He is meeting with community members to share the need and gather support.

"It's sad now that we're going through this pandemic, it's making finances harder for people," he says. "I know we can reach the goal if we stay with it and get the word out. It's not hard to convince people either, they are pretty open to wanting to help."

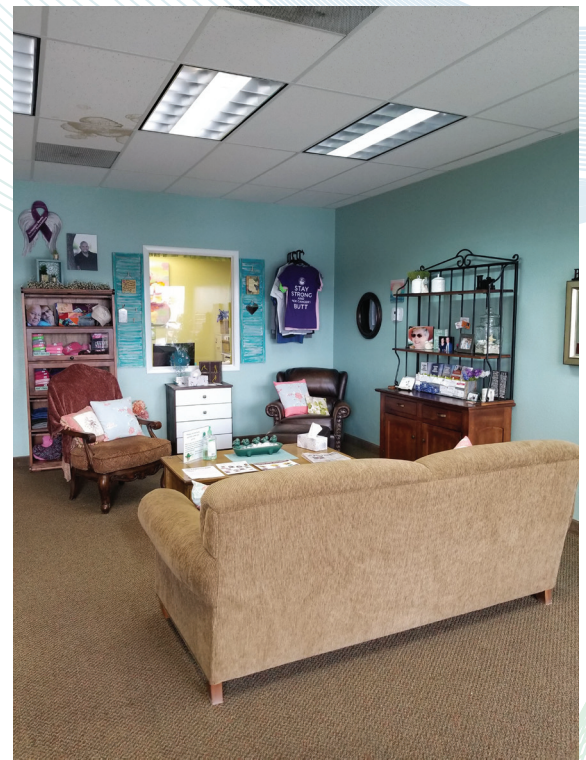


Campaign Partners Re-Open to the Public

Columbia Basin Cancer Foundation re-opened its doors to the community on June 1. If you visit their office, you'll be greeted by their friendly staff, new and vibrantly painted common areas, and a cheery re-organized space. They have free masks for clients and their families. Sometimes, they also have fresh fruit and vegetables that have been donated by local farms. CBCF's hours are Monday – Thursday from 10 am – 2 pm or by appointment.

Confluence Health's Moses Lake Clinic continues to offer in-office, video and telephone visits for area residents. To keep everyone safe, please wear a mask to the in-clinic appointments.

These two campaign partner organizations are eager to help and serve the community during these trying times.



Project Scope

- 1 Provide local radiation oncology services for patients and their caregivers in the Columbia Basin
- 2 Bring state-of-the-art radiation treatment protocols to the Columbia Basin in a cost-effective, self-sustaining model of care
- 3 Grow CBCF's mission to include more local support services to cancer patients



Confluence Health Foundation

518 N. Chelan Ave.
Wenatchee, WA 98801
509.665.6030



COLUMBIA BASIN CANCER FOUNDATION

Columbia Basin Cancer Foundation

1031 W. Broadway Ave.
Moses Lake, WA 98837
509.764.4644